



Pacific Climate Change Centre



30th June 2021

‘Ofa Ma’asi-Kaisamy

Manager, Pacific Climate Change Centre





Introduction of PCCC

- ◆ PCCC is the regional centre of excellence for climate change information, research and innovation hosted at SPREP and established in 2019.
- ◆ The PCCC is a partnership between the Governments of Japan and Samoa. It is funded under grant aid through JICA for Samoa as the host country of SPREP..
- ◆ Its operation has been expanded with support from the Government of New Zealand.



Four Key Functions

Knowledge Brokerage

Building partnerships between the providers and users of climate change information.

Improving access to scientifically robust, practical information that is available to the right people and the right time in formats that they can use.

Ensuring that high quality, practical, user-friendly information drives greater action on climate change.

Innovation

Fostering innovation and promoting the development of new climate services and products.

Holding 'challenge events' to bring together researcher, policymakers and practitioners to find solutions to key climate-related challenges.

Supporting the implementation of the Pacific Roadmap for Strengthened Climate Services.

PACIFIC CLIMATE CHANGE CENTRE

Applied Research

Hosting and supporting applied research aligned to the needs of Pacific communities.

Strengthening capacity to deliver research within the region while drawing upon world-leading research from elsewhere.

Supporting the implementation of the proposed Pacific Climate Science Research Strategy.

Capacity Building

Supporting capacity building within national meteorological services by delivery the training node of the WMO Pacific Regional Climate Centre.

Improving the coordination of climate change training efforts in the region by building effective partnerships and promoting events.

Delivering a programme of capacity building support directly to PICTs



Example: Capacity Building

2019 - 2020	2021	2022
<ul style="list-style-type: none"> ① November: Hazard and Risk Assessment for Coastal Area Management by Using Remote Sensing Technology ② September: Climate Science – ③ November: Access to Climate Finance (Part 1): ④ November-December: Access to Climate Finance (Part 2): 	<ul style="list-style-type: none"> ⑤ March: disaster risk reduction through structural approaches ⑥ Late June: ecosystem-based adaptation and mitigation ⑦ September: food production systems ⑧ Late November: health 	<ul style="list-style-type: none"> ⑨ March: tourism ⑩ May: water ⑪ August: Access to Climate Finance (Part 3) ⑫ November: Access to Climate Finance (Part 4)

Module 1

CLIMATE SCIENCE

- Observed and projected climate change, hazard/ exposure/ vulnerability/ risk, vulnerability assessment of targeted sectors, GHG emissions

Module 2

ADAPTATION and MITIGATION OPTIONS

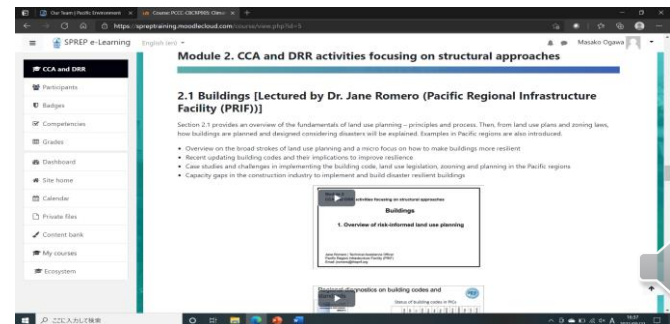
- Policies, technologies, practices, challenges, co-benefits, climate service, cases in the Pacific

Module 3

LOGICAL FRAMEWORK DEVELOPMENT

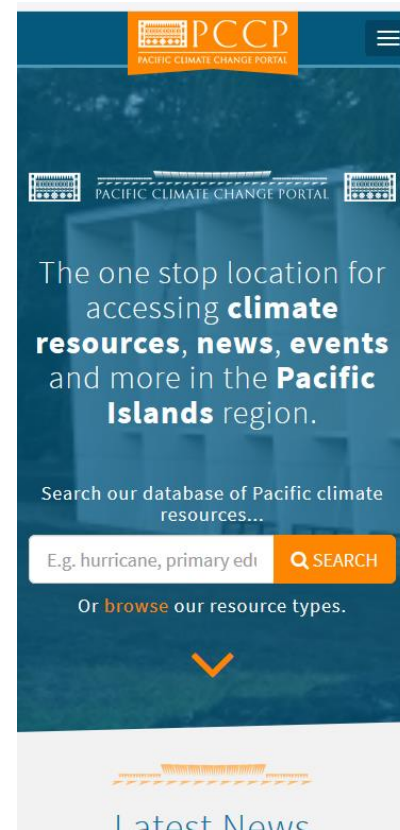
- Problem and objective trees to uncover connections of causes & effects, logical framework as key for formulating climate change projects

to contribute implementation of NAPs and NDCs



Pacific Climate Change Portal

- Today's portals remain an essential tool to access information and play an important role in IKM and KB
- Need to keep the needs of users at the forefront
- mobile view
- accessibility
- proliferation of portals



Key Priorities in 2021

Knowledge Brokerage

Develop highly engaging case studies for KB Pacific

Draft a concept note and submission for IKI GIZ Funding

Inclusive collaboration and coordination to meet the gaps in knowledge brokering initiatives in Pacific island countries and territories.

Timely and predictable voluntary contribution to be able to plan the PCCC's work on Knowledge Brokerage and to effectively, support the work of its Secretariat, SPREP/CCR and the Advisory Board.

Capacity Building

Secure funding for a coordinator to coordinate CCR and PCCC capacity building initiatives and activities

Support for training for PCCC-based researchers in regional priorities, needs and application context (including cultural factors) to enhance the impact and relevance of research

Ongoing support to building the e-learning platform

Applied Research

Collaborate for establishment of resident researchers in the PCCC building within the first year.

Establish the network of climate change researchers in the region, including improving regional participation in IPCC processes

Innovation

Host the first Pacific Climate Change Innovative Solutions Platform

Adequate funding for showcasing innovative policies and products within and outside the region using virtual platform

Information products developed for the private sector and civil society at national level (e.g. through Chambers of Commerce) • PCCP innovation webpage published and regularly updated



Thank you
pccc@sprep.org

