



CLIMATE IRELAND: SUPPORTING LOCAL ADAPTATION, NATIONAL POLICY AND PRACTICE

Jeremy Gault & Barry O'Dwyer
MaREI Centre, Environmental Research Institute,
University College Cork, Ireland

WHY CLIMATE IRELAND?

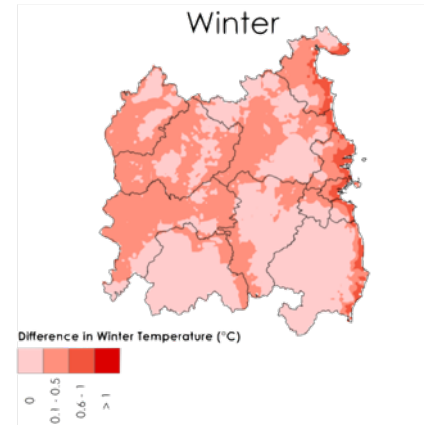
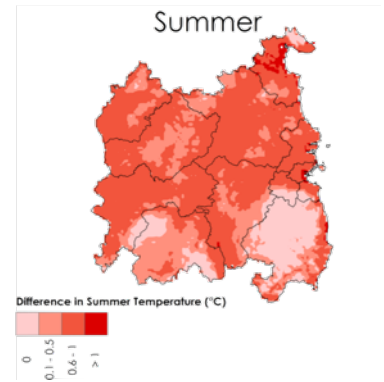
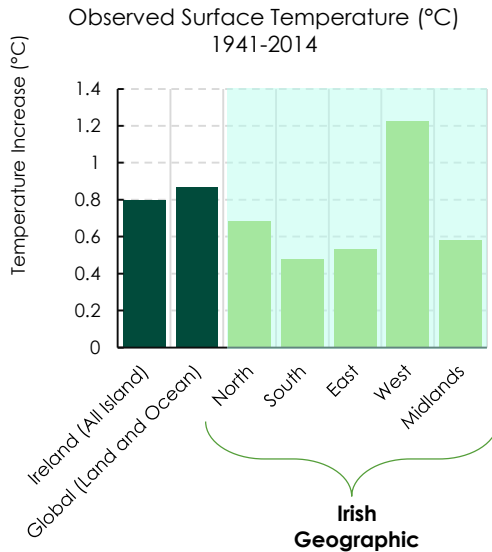
- Ireland's **climate is changing**;
- In addition to efforts to reduce the rate and intensity of climate change (mitigation), **adaptation** is now required;
- A collaborative response is needed to ensure that Ireland becomes **climate-ready**;
- Through collaboration and partnership, **Climate Ireland** is building the foundations for this collaborative response.



(Photos courtesy of Iamroid Éireann)

WHY CLIMATE IRELAND?

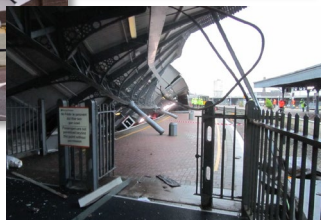
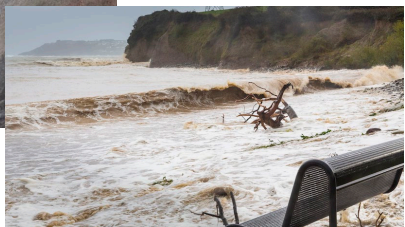
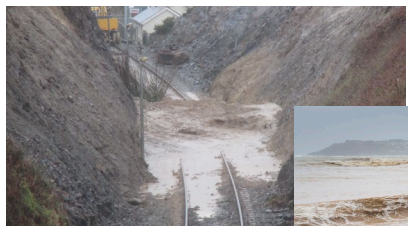
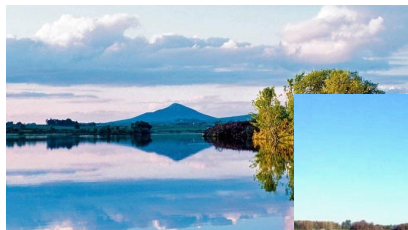
- Ireland's **climate is changing**;



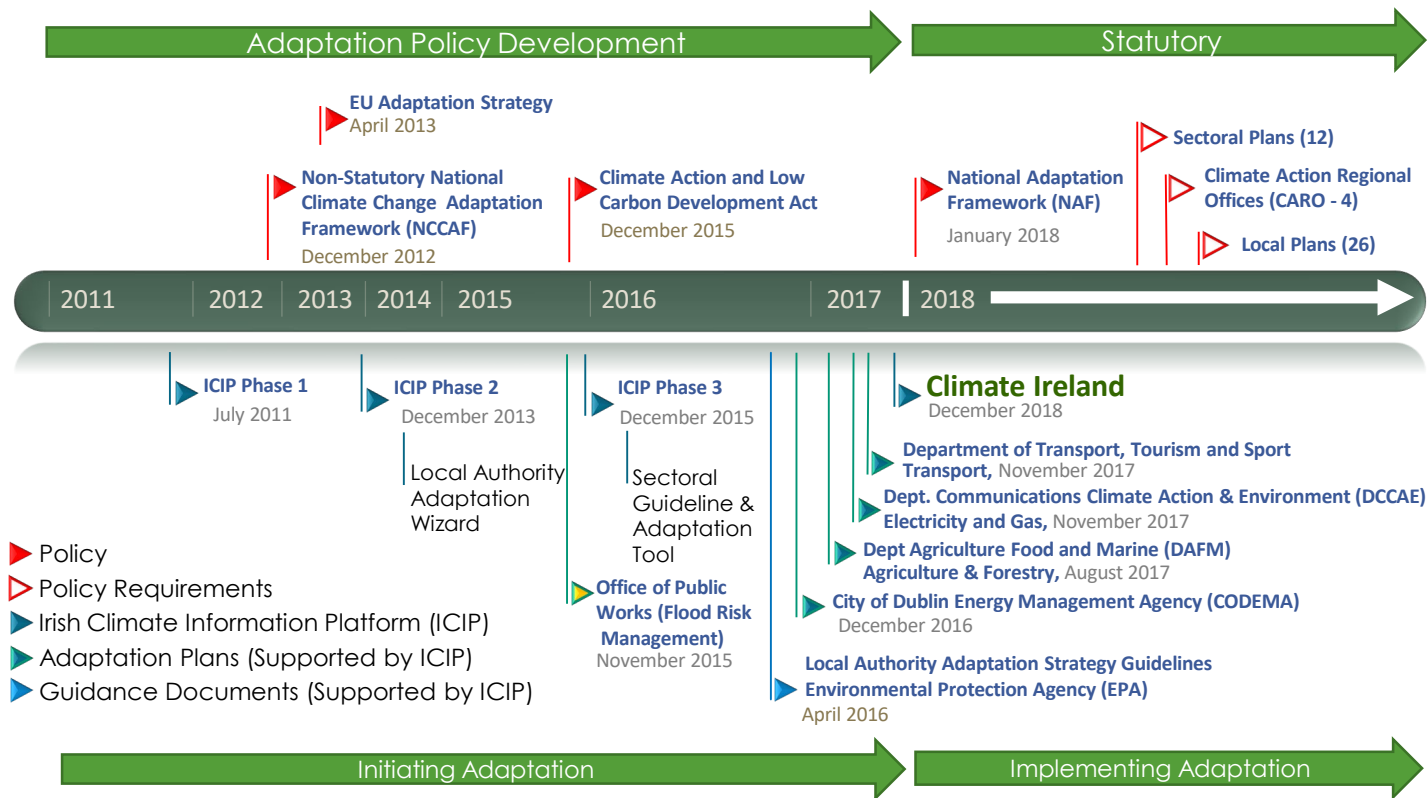
Temperature Change between 1961-1990
and 1981-2010 (Maps by generated by PJ
Alexander based on Met Éireann Data)

WHY CLIMATE IRELAND?

- And with a **wide range of impacts;**



EVOLUTION OF CLIMATE IRELAND



EVOLUTION OF CLIMATE IRELAND

CLIMATE ADAPTATION POLICY: NATIONAL ADAPTATION FRAMEWORK (2018)

- Low Carbon and Climate Action Act (2015):
 - National Mitigation Plan;
 - **National Adaptation Framework (NAF);**
 - National Climate Change Advisory Council.
- NAF provides for a coordinated and whole of government response.
- Requires the development of local adaptation plans **by September 30th 2019**
- Iterative – Learning by Doing.



Adaptation under this Framework should seek to minimise costs and maximise the opportunities arising from climate change

EVOLUTION OF CLIMATE IRELAND

SECTORAL ADAPTATION

- Requirement for Government Depts. to prepare sectoral adaptation plans;
- Include specific and measurable policies;
- Cross sectoral adaptation planning – Importance is recognised;
- Interaction with Regional Climate Offices is a necessity.
- **Adaptation is ultimately implemented at the local scale**

Theme	Sector Level	Lead Department
Natural and Cultural Capital	Seafood	Department of Agriculture, Food and the Marine
	Agriculture	
	Forestry	
	Biodiversity	Department of Culture, Heritage and the Gaeltacht
	Built and Archaeological Heritage	
Critical Infra.	Transport Infra.	Department of Transport, Tourism and Sport
	Electricity & Gas Networks	Department of Communications, Climate Action and Environment
	Communication Networks	
Water Resource & Flood Risk Mgt	Flood Risk Management	Office of Public Works
	Water Quality	Department of Housing, Planning and Local Government
	Water Services Infra.	
Public Health	Health	Department of Health

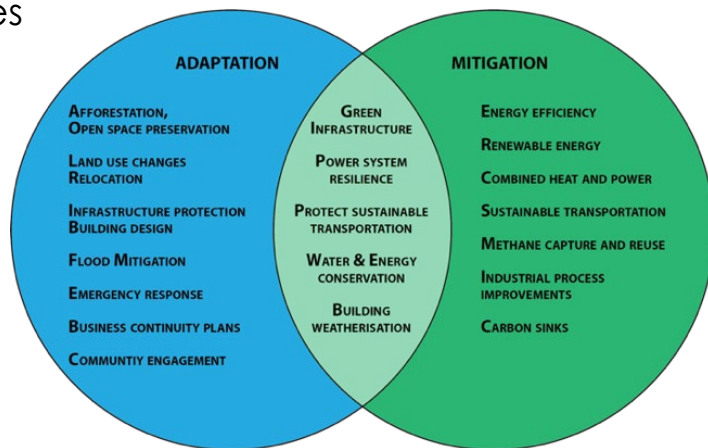
EVOLUTION OF CLIMATE IRELAND

REGIONAL AND LOCAL ADAPTATION PLANNING

- Climate Action Regional Offices (CAROs - established 2018):
 - Mitigation **and** Adaptation;
 - Academic Partnership – Expert Couplets;
 - Centres of Expertise;
 - A Resource to Other County Council (Local Authority) Offices;
 - Enable a more co-ordinated engagement across all of government;
 - Cross Office and Sectoral collaboration is key.

Local Plans to:

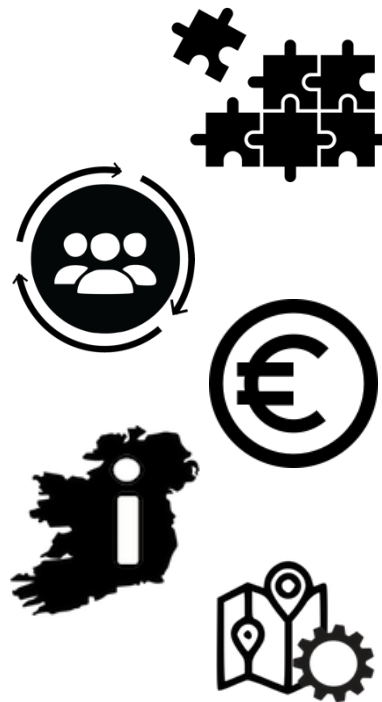
- *Adopt local adaptation strategies based on the regional governance approach;*
- *Reduce the Vulnerability of the State to the negative effects of climate change and avail of any benefits that may occur.*



EVOLUTION OF CLIMATE IRELAND

CRITICAL SUCCESS FACTORS

- Policy integration and alignment – whole of government approach;
- Behavioural change – Buy in by all;
- Increasing knowledge and information;
- Technology advancement;
- Resources/Finances;
- Local Authorities are a key player (e.g. Flood Risk Management, Biodiversity, transport, planning).

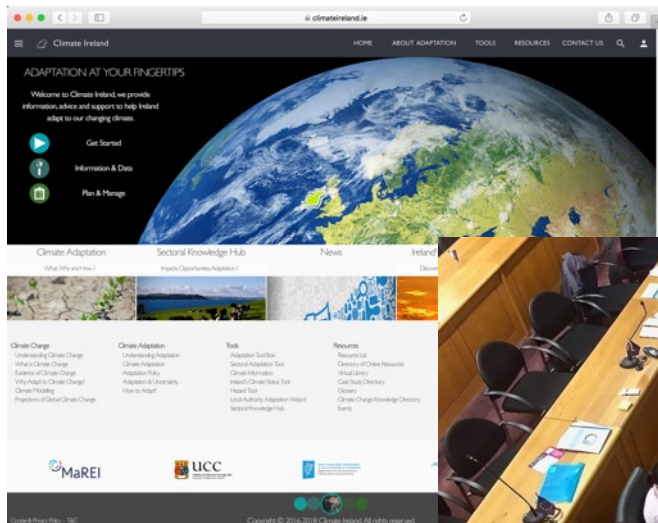


EVOLUTION OF CLIMATE IRELAND





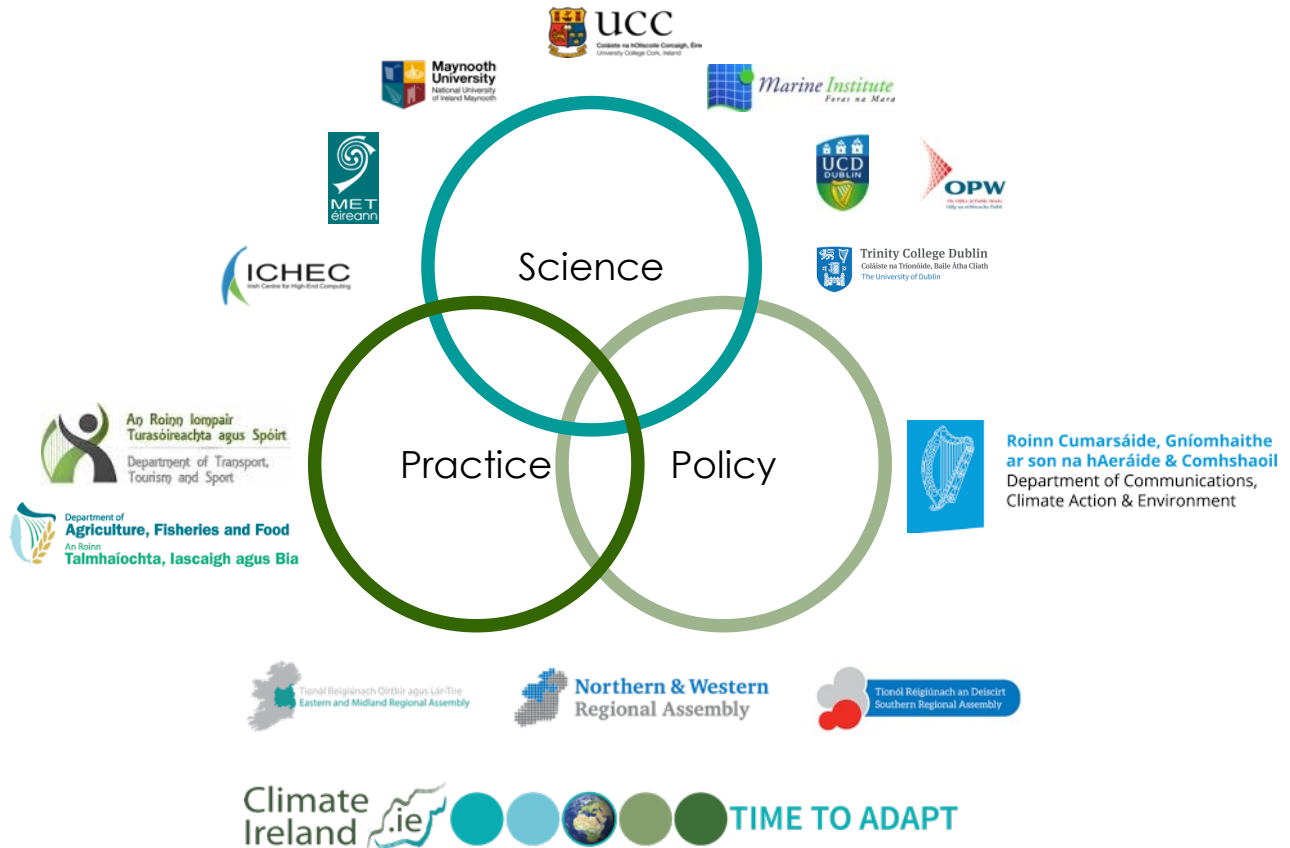
IRELAND'S ONLINE SOURCE OF CLIMATE & ADAPTATION INFORMATION



DEVELOPING CAPACITY & SUPPORTING PLANNING

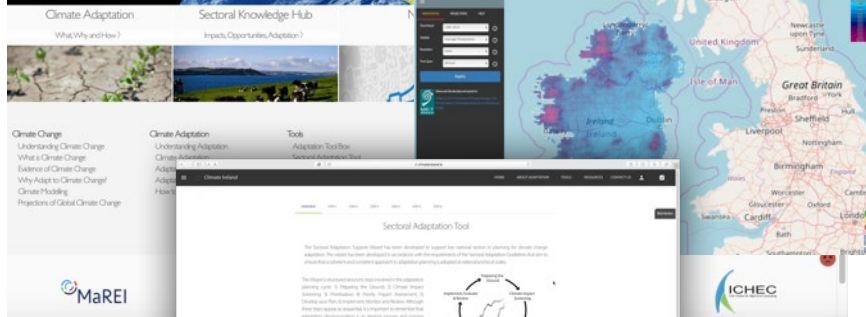
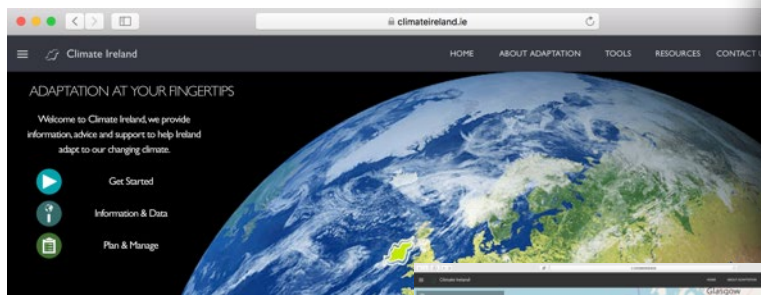


WORKING IN PARTNERSHIP





CLIMATE IRELAND



Get Started



Information & Data



Planning & Managing

Climate Ireland .ie



TIME TO ADAPT



CLIMATE IRELAND



Sectoral



Local

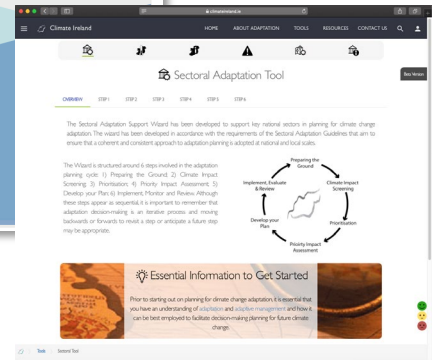
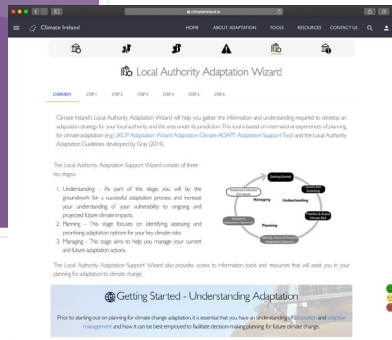
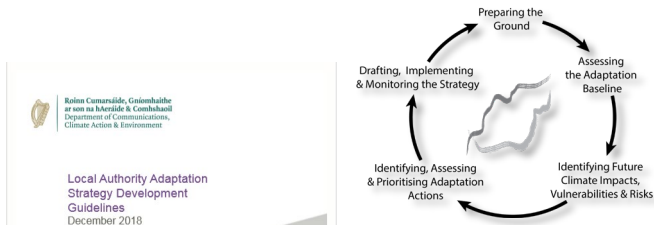


**DEVELOPING
CAPACITY &
SUPPORTING
PLANNING**



SUPPORTING ADAPTATION AT SECTORAL AND LOCAL LEVEL

Ireland's National Adaptation Framework **requires** the development of both local and sectoral adaptation plans. This is being supported by Climate Ireland through the development of adaptation guidelines and online tools.





SUPPORTING ADAPTATION THROUGH BUILDING LOCAL CAPACITY

Climate Change Adaptation Guidelines Research Workshop

Dur, 29 Mar 2014, 10.00am - 4pm

Vicere EPA National Conference, Clonsilla Road, Dublin 14

Rationale: Under the National Climate Change Adaptation Framework, Local Authorities are required to prepare climate change adaptation plans that are consistent with the National Climate Change Adaptation Framework. These plans must be submitted by mid-2014. The EPA, through its research programme, is leading information provision and support of local authorities.

Programme: This workshop will provide an overview of the guidelines and tools that are currently being developed to support the preparation of climate adaptation plans for local authority planning.

Aims: The workshop aims to introduce local authorities to the process of developing an adaptation plan, and to discuss the research and information that is available to support the development of the plan.



Audience: The workshop is primarily targeted at those involved in developing climate adaptation plans for local authority planning.

Workshop Agenda:

- An overview of climate change and its possible impacts in Ireland
- A guided tour of local authority climate change adaptation plans
- Information on the research and information that is available to support the development of the plan
- How to access the research and information that is available to support the development of the plan
- The workshop will conclude with a Q&A session

Please email clara.mccormack@epa.ie for more information

Climate Change Adaptation in Action: Science, Policy and Practice

Date & Venue

November 4th - 20.00, Custom House, Dublin

November 12th - 10.00, City Hall, Galway

November 18th - 10.00, National Training Centre, Ballinacorney, Cork

Rationale: The Climate Action and Low Carbon Development Bill 2015 is a landmark piece of legislation that sets out the Government's climate change adaptation plan. The Bill and the Bill's provisions are being implemented across the country in support of the strategy through a series of local authority actions.

Programme: The seminar will aim to introduce local authorities to the science of climate change adaptation planning and available decision support tools in doing so. It will also cover climate change adaptation planning and decision making, supported by a series of case studies and practical exercises.



Expected agenda items:

- Climate Policy
- The Science of Climate Change and its Potential Impacts for Ireland
- Information Support for Climate Adaptation
- Planning and Adaptation Planning
- Planning and Adaptation Planning in the South Dublin County Council

Please email clara.mccormack@epa.ie to confirm your interest



Climate Ireland .ie INVITATION

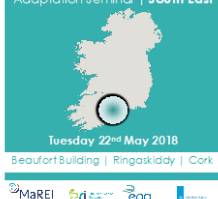


What is Climate Ireland .ie?
Climate Ireland .ie is a national platform for climate change information and support. It provides a central hub for all climate change information and support, including a range of resources, tools, and services. It is a free-to-use platform that is available to all citizens and businesses. It is a platform that is designed to support the development of climate change adaptation plans and to provide a range of services to support the development of climate change adaptation plans.

Regional Climate Change Adaptation Seminar | South East

Tuesday 22nd May 2018

Beaufort Building | Ringaskiddy | Cork



Climate Ireland .ie #TIME2O Adapt

CLIMATE ACTION: REGIONAL & PROS ADAPTATION PLANNING TRAINING WORKSHOPS

2018

2018

2018

2018

2018

2018

2018

2018

2018

2018

2018

2018

2018

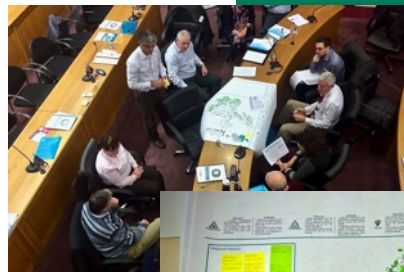
2018



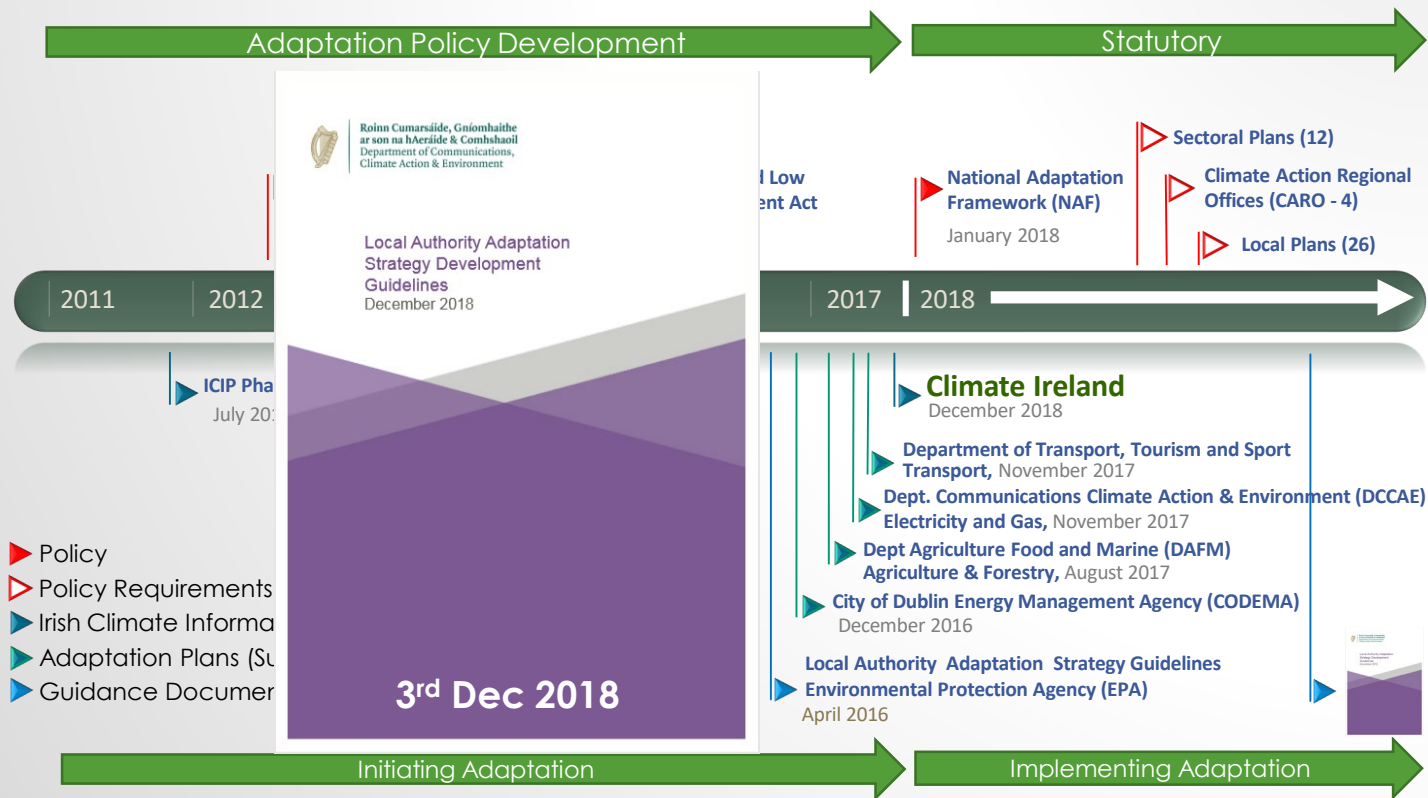


EVOLVING CLIMATE POLICY AND EXPERIENCE

- Climate Adaptation is an iterative process;
- Climate Ireland is successfully supporting decision makers through the process by:
 1. Raising awareness;
 2. Providing information and data;
 3. Supporting decision making.
- Experience of working with the National Government and Local Authority sector **is essential** to understand and anticipate evolving user needs .



EVOLUTION OF CLIMATE IRELAND





Thank you for your attention



<http://www.climateireland.ie>



j.gault@ucc.ie, b.odwyer@ucc.ie



[@ClimateIreland](https://twitter.com/ClimateIreland)